



DEDICATED TO RENEWABLE ENERGY

THE VISION

AGRA Energy is installing cutting-edge science and technology to transform methane gas pollution into renewable energy fuels.

Our MISSION is laser-focused:

- Implement engineering solutions to shift consumption away from fossil fuels.
- Realize economic returns that provoke meaningful action within the greater society.
- Provide leadership as a catalyst for change in the energy landscape

THE TECHNOLOGY

Through partnerships and invention, we have created a MICRO-GTL process to gather a feedstock of hydrocarbon gas, from multiple sources, and create AGRA Synthetic Fuel (ASF) through chemical reaction.

Our technology is a major advancement in the proven “gas-to-liquids” conversion process.



AGRA Synthetic Fuel **Fossil Fuel Diesel**

**From POLLUTION
... to SOLUTION!**

OUR BUSINESS

AGRA Energy is partnering with farms, municipalities and private industry to attack pollution methane sources. Our company will manufacture, install and operate our proprietary Micro-GTL units to produce renewable fuels that target reduction of fossil fuel usage.

Our strategic alliances include Southern Research Labs, BASF, and Chevron.

The synthetic fuel product (ASF) will be available for all transportation demands including trucking, marine, autos and civil services.

As a “first-mover” in technology, AGRA Energy is dedicated to reducing the 10,000,000 gallons of diesel fuels consumed in the California economy each day.

OUR TEAM

With decades of experience in energy, our team is focused on providing pragmatic solutions to our global energy challenges ... making cleaner fuels to bridge to the future through innovation.

We embrace the opportunity for global change.

It is not academic theory; **it is field application.**

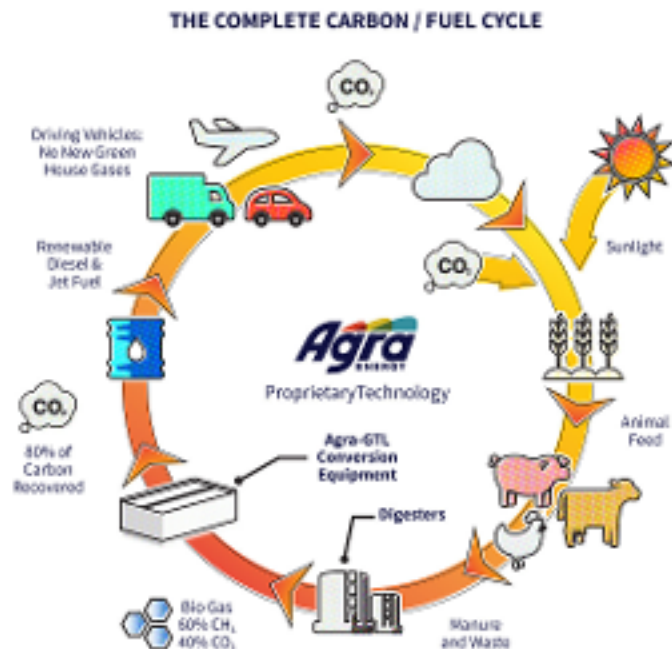
It is not a political conversation; **it is a scientific solution.**

It is not five years away; **it is today.**

OPERATIONS



- 1) Input of 500,000 scf of source gas yields approximately 32 barrels per day of renewal synthetic diesel (ASF)
- 2) Adaptability suits diverse pollution feedstocks: municipal wastewater, land-fill, agricultural and food-waste processing
- 3) Location footprint for installation is approximately 60' x 60'
- 4) Our GTL unit is prefabricated, modular and transportable with convenient connection to existing infrastructure
- 5) System is designed to achieve GHG of 60+%



CONTACT

Gary D. Simpson | Founder, Chairman & CEO
Gary.Simpson@agraenergy.com
www.agraenergy.com



"REDUCING YOUR CARBON HOOF-PRINT"